

FIRST CHOICE BULL SALE

20th ANNUAL



**SATURDAY APRIL 2, 2011
1:00 P.M.**

**SALE TO BE HELD AT
VJV AUCTION MART
DAWSON CREEK, BC**

Sale conducted by Patterson's Auction Mart Ltd.
Sale day phone (250) 719-8191 or (250) 219-0791 for phone in bids

**APPROXIMATELY
50 BLACK ANGUS YEARLING BULLS**

CONSIGNORS

**GUMBO GULCH CATTLE CO.
B.Z. & STEVE AYLWARD
(250) 786-5478
CELL: (250) 784-5136**

**CANYON TREE FARMS INC.
LYNN JACKSON &
HARRY HOOKE
(250) 996-8180
www.canyontreefarms.ca**



*Hydraulic Motors • Pumps • Cylinder Repairs & Sales
• Agriculture & Industrial Bearings and Seals
Driveshaft Repairs and Components (Spicer, etc)
Portable Align Bore Trailer*

**Ph (250) 782-4100
Fax: (250) 782-4112**

537-114 Avenue, Dawson Creek, BC



Dawson Co-operative Union

WARREN FREDERICKSON

Agro Manager

Home & Agro Center

10200-8th Street
Dawson Creek, BC
V1G 3P8

Business (250) 782-3371
Fax (250) 782-8891



WELCOME TO FIRST CHOICE 2011 20TH ANNUAL SALE

Gumbo Gulch Cattle Co. • B.Z. and Steve Aylward, Dawson Creek, BC

The Aylward family invite you to our 20th Annual Bull Sale. Thanks to all bidders and buyers at our previous sales and welcome to new bidders and potential buyers. We also welcome guest consignors Brian and Dana Smith, who offer good polled Hereford bulls for your consideration.

We are pleased to welcome guest consignors Lynn Jackson and Harry Hooke of Canyon Tree Farms. they are contributing 4 of the best from their elite herd..

For 44 years we have been producing and improving Black Angus cattle for cattlemen across northern B.C. and Alberta and beyond. With over 200 cows bred to leading natural and A.I. sires only the top half make it to the sale.

Sires are selected for traits important to our customers who sell beef by the pound - live calves with explosive growth and performance.

The cattle have been carefully and ruthlessly selected for soundness, conformation and productivity and the many other important traits for which Angus are noted. Raised in real ranch conditions Gumbo Gulch Bulls are ready to work anywhere, anytime.

Whatever your needs we have the bulls to do the job. Please join us on April 2nd for lunch and the 20th Annual First Choice Bull Sale.

Gumbo Gulch Cattle Co.



*Weaning Date:
November 12, 2010*

INSURANCE AVAILABLE ON SALE DAY

PATTERSON'S AUCTION MART LTD.



Bonded and Licensed Livestock
Dealers and Auctioneers

TEL: (250) 782-3923

TEL: (250) 782-6500

FAX: (250) 782-1881

EMAIL: pcc@neonet.bc.ca

BOX 478

DAWSON CREEK BC

V1G 4H3



Tiger
PRINTING &
STATIONERS

OP office[™]
plus

No BULL...
Just Quality Service
and Reliability

250.782.2907 • 800.665.3831

www.tiger.bc.ca • mail@tiger.bc.ca

916 - 102nd Avenue, Dawson Creek, BC V1G 2B7

TABLE OF CONTENTS

Expected Progeny Differences (EPDS)	4
Why So Much Emphasis on Bulls	4
Gumbo Gulch A1 Reference Sire	
Mahnen Dynamite.	5
Harb Pendleton.	5
Double AA Old Post Bandolier	6
Gumbo Gulch Natural Sires.	7
B.B.A.R. Nugget 765.	6
B.B.A.R. Legacy 834.	7
Crosby Foresight 78U.	7
Crosby Foresight 91U.	7
Gumbo Gulch Black Angus Bulls	9
Canyon Tree Farms Black Angus Bulls	18
Terms & Conditions of Sale	20

Calving Ease - (CE)

Calving ease is often related to birth weight of a bull. This is partly true but there are other factors that influence calving ease. The dam and her management are at least 50% of calving ease.

Nutrition, gestation and environment all influence birth weight. We have rated each bull in the sale based on all the information we have available.

- *** Should produce minimal problems when bred to moderate size first calf heifers
- ** Recommended for second calvers, small framed cows large heifers.
- * Recommended for mature cows.



Contact consignors for details

EXPECTED PROGENY DIFFERENCES (EPDS)

Statistics generated for individual cattle through national genetic evaluations.

- ✓ allow breeders to estimate a young animal's breeding value as a parent
- ✓ allow a fair comparison of breeding value by removing environmental bias such as climate, feed and special management
- ✓ best tool available to compare animals between herd, countries and year of birth
- ✓ help breeders make informed decisions regarding breeding stock selection by evaluating numerous traits such as growth-related traits (BW, WW, YW, Milk), carcass (REA, FAT, %IMF, etc.) and reproductive efficiency (CE, MCE, SC)
- ✓ estimate the group performance of one parent compared to the group performance of another parent, *assuming similar mates*

EPD's evaluate group averages and offspring's performance. They can not predict individual performance or weights.

For example, if Bull A (weaning weight EPD of +10) and Bull B (WW of +60) were randomly mated with ten similar cows, we would expect the group average weaning weight of Bull A's offspring to be 50 lbs. lighter than that of Bull B's (60 - 10 = 50).

Calf	A	B
1	500	400
2	510	450
3	520	500
4	530	550
5	540	600
6	560	600
7	570	650
8	580	700
9	590	750
10	600	800
Avg.	550	600

Note that not all calves from Bull B have a higher weaning weight but the average is 50 lbs higher.

BULL A

COW HERD

BULL B

GROUP A OFFSPRING (Avg. 550 lbs)

GROUP B OFFSPRING (Avg. 600 lbs)

Accuracy - reflects the reliability of the EPD value. High accuracy values (>.80) mean the EPD value is closer to the true breeding value than an EPD value with a lower accuracy (<.20).

To evaluate seedstock, use EPD's pedigree and visual assessment. With EPDs, the concept of "intermediate optimums" works best. Selection for one trait or for extremes generally results in unexpected consequences due to genetic correlations - for example,

intense selection for high yearling weight will also increase birth weight. Successful cattle breeding requires a thoughtful and balanced approach to optimize fertility, growth and carcass merit while improving profitability and efficiency.

Why so much emphasis on Bulls?



Bulls

have the greatest economic impact on any breeding program, thus bull selection is one of the most important decisions that a cowman makes during the course of a year.

A bull sires 20 to 40 calves each year while a cow produces half or less this many in her lifetime. It's been estimated that 80% of herd improvement is directly attributed to bull selection.

All Reference Sires



January 23, 2006

JAUER 353 TRAVELER 589 27
BALDRIDGE KABOOM K243 KCF
 PLEASANTA OF CONANGA 736
 CLEARWATER PAF SEVILLE 1977
MOHNEN JILT 910
 MOHNEN JILT 143

Dynamite progeny are standouts in any contemporary group for their massive body composition and muscularity.

BW: 100 lbs

1AN01135 MAHNEN **dynamite** A356 AMF, NHF

	BW	WW	YW	MILK
EPDS	+2.5	+59	+115	+13
ACC	85	80	76	40



February 7, 2005

SITZ TRAVELER 8180
S A V FINAL ANSWER 0035
 S A V EMULOUS 8145
 H A R B HIGH PLAINS 975 JH
H A R B BLACK LADY 375 J H
 H A R B BLACK LADY 073 J H

Unmatched in the industry for combining explosive performance and low birth weights along with unusual muscle and mass for a calving ease sire.

BW: 79 lbs

1AN01134 HARB **Pendleton** 765 J H AMF, NHF

	BW	WW	YW	MILK
EPDS	+0.1	+59	+107	+30
ACC	96	93	89	47

All Reference Sires



February 15, 2003

DOUBLE AA BLACKMAN 24'93

DOUBLE AA BLACKMAN 252'96

DOUBLE AA ANNIE K 620'91

JOHNSTON BANDOLIER 849E

DOUBLE AA ANNIE K 548'99

DOUBLE AA ANNIE K 280'96

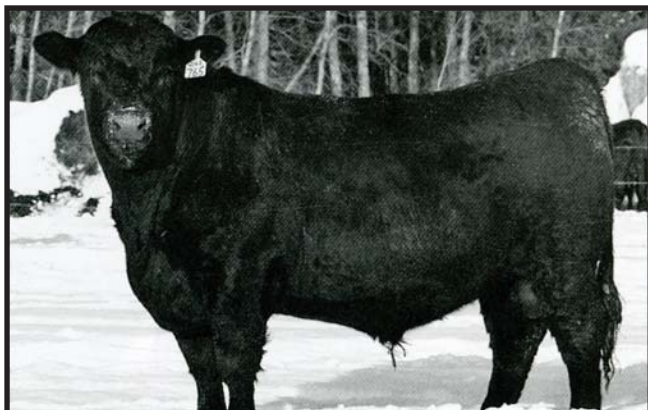
A powerful and athletic individual that is admired for his extra length of body, thickness and added depth of body.

BW: 89 lbs

1AN01166 DOUBLE AA **Old Post** BANDOLIER AMF, NHF

	BW	WW	YW	MILK
EPDS	+5.1	+42	+66	+7
ACC	76	65	41	18

Natural Sires



April 22, 2007

JOHNSTON NUGGET 370E

B.B.A.R. NUGGET 318

MISS MORRISON 18C

B.B.A.R. ROYCE 24G

B.B.A.R. BLACKCAP 3165

B.B.A.R. BLACKCAP 1165

A powerful and athletic individual that is admired for his extra length of body, thickness and added depth of body.

BW: 81 lbs

LAE 65T **B.B.A.R. Nugget 765**

	BW	WW	YW	MILK
EPDS	+2.0	+29	+57	+7
ACC	33	21	20	11

Natural Sires

B.B.A.R. LEGACY 834

O C C ECHELON 857E
O C C LEGACY 839L
O C C DIXIE ERICA 960E
B.B.A.R. ROYCE 24G
B.B.A.R. RUBY BELLE 34'99
B.B.A.R. RUBY BELLE 34G

FEBRUARY 19, 2009
BW: 82

BW: +1.7
WW: +37
YW: +68
MILK: +16

CROSBY FORSIGHT 78U

WOODHILL FORESIGHT
RRAR FORSIGHT 5S
WWF BRUNO BELLE 53N
NORTHLINE JEDI 27J
CROSBY AGNES 85M
SILVER STAR 56H

FEBRUARY 1, 2008
BW: 80

BW: +2.8
WW: +49
YW: +72
MILK: +16

CROSBY FORSIGHT 91U

WOODHILL FORESIGHT
RRAR FORSIGHT 5S
WWF BRUNO BELLE 53N
WIWA CREEK STOCKMAN 25'95
REICH PRIDE 10L
REICH PRIDE 21G

FEBRUARY 10, 2008
BW: 89

BW: +4.4
WW: +43
YW: +87
MILK: +17

CLEARFAB



FREE STANDING PANELS



HENRY STAHL

PHONE: 780-685-2870
CELL: 780-834-7512
clearfab@hotmail.com

BOX 159
CLEARDALE, AB
T0H 3Y0

DELIVERY AVAILABLE

KEDDIE'S.COM

Feed • Ranch Supplies • Clothing • Saddlery

- **MORAND EQUIPMENT**
- **TRAILER & FARM EQUIPMENT RENTALS**
- **METAL ROOFING & SIDING**

1-800-390-6924



JOHN DEERE

PRAIRIE COAST
equipment

DAVE ANDERSON

Agricultural Sales Representative

250-219-1831

DALE HOFSTRAND

Agricultural Sales Representative

250-719-9250

Bus: 250-782-4141

Fax: 250-782-9780

Toll Free: 1-877-553-3373

81 Rolla Road Box 720

Dawson Creek, BC

V1G 4H7

www.pcequip.ca

Dale & Steve Aylward
GUMBO GULCH CATTLE CO.

Farm located on Edmonton Highway 4 Miles South of Pouce Coupe BC
Phone: (250) 786-5031 or 786-5478 • Cell: (250) 784-5136

Black Angus

LOT 14X *	GUMBO GULCH DYNAMITE 14X JNI 14X	FEBRUARY 7, 2010 BW: 100	WW: 929
	BALDRIDGE KABOOM K243 KCF MOHNEN DYNAMITE 1356 MOHNEN JILT 910 TC FOREMAN 016 LUCY OF GUMBO GULCH 117R LUCY OF GUMBO GULCH 100J		
LOT 17X ***	GUMBO GULCH PENDLETON 17X JIN 17X	FEBRUARY 9, 2010 BW: 71	WW: 790
	S A V FINAL ANSWER 0035 HARB PENDLETON 765 J H H A R B BLACK LADY 375 J H SEALIN CREEK HEADS UP 119S BLACKCAP OF GUMBO GULCH 122U BLACKCAP OF GUMBO GULCH 71S		
LOT 21X *	GUMBO GULCH DYNAMITE 21X JIN 21X	FEBRUARY 10, 2010 BW: 89	WW: 895
	BALDRIDGE KABOOM K243 KCF MOHNEN DYNAMITE 1356 MOHNEN JILT 910 BON VIEW BANDO 1245 HAMBLIN BESSIE 9M HAMBLIN BESSIE WALKER 272K		
LOX 24X *	GUMBO GULCH DYNAMITE 24X JIN 24X	FEBRUARY 11, 2010 BW: 93	WW: 1022
	BALDRIDGE KABOOM K243 KCF MOHNEN DYNAMITE 1356 MOHNEN JILT 910 WHAM'S HIGH PRIDE 16E CASSIE OF GUMBO GULCH 130J CASSIE OF GUMBO GULCH 38B		
LOT 25X ***	GUMBO GULCH PENDLETON 25X JNI 25X	FEBRUARY 11, 2010 BW: 92	WW: 903
	S A V FINAL ANSWER 0035 HARB PENDLETON 765 J H H A R B BLACK LADY 375 J H LOOKOUT TRENDSETTER 124L GEORGINA OF GUMBO GULCH 64N GEORGINA OF GUMBO GULCH 111K		

LOT 27X GUMBO GULCH WILDFIRE 27X FEBRUARY 12, 2010
** JN1 27X BW: 98 WW: 940

 S A V 8180 TRAVELER 004
ANKONIAN WERNER WILD FIRE 96
 FSR ELBA SPECIAL DESIGN S406
 LINDON BATTLE CRY 18L
EVERA OF GUMBO GULCH 95P
 EVERA OF GUMBO GULCH 76E

LOT 29X GUMBO GULCH PENDLETON 29X FEBRUARY 12, 2010
*** JN1 29X BW: 81 WW: 735

 S A V FINAL ANSWER 0035
HARB PENDLETON 765 J H
 H A R B BLACK LADY 375 J H
 CROSBY TOM BOY 106S
CASSIE OF GUMBO GULCH 114U
 CASSIE OF GUMBO GULCH 2K

LOT 33X GUMBO GULCH PENDLETON 33X FEBRUARY 13, 2010
*** JN1 33X BW: 85 WW: 782

 S A V FINAL ANSWER 0035
HARB PENDLETON 765 J H
 H A R B BLACK LADY 375 J H
 H A IMAGE MAKER 0415
LUCY OF GUMBO GULCH 32U
 LUCY OF GUMBO GULCH 117R

LOT 35X GUMBO GULCH PENDLETON 25X FEBRUARY 14, 2010
*** JN1 35X BW: 77 WW: 813

 S A V FINAL ANSWER 0035
HARB PENDLETON 765 J H
 H A R B BLACK LADY 375 J H
 S A V LEGACY 5216
BLACKBIRD OF GUMBO GULCH 68U
 BLACKBIRD OF GUMBO GULCH 145

LOT 36X GUMBO GULCH PENDLETON 36X FEBRUARY 14, 2010
*** JN1 36X BW: 80 WW: 1022

 S A V FINAL ANSWER 0035
HARB PENDLETON 765 J H
 H A R B BLACK LADY 375 J H
 MINBURN BARDOLIER 52R
PRIDE OF GUMBO GULCH 84J
 SUNNIEBEND PRIDE 8X

LOT 38X **	GUMBO GULCH FORSIGHT 38X JNI 38X	BW: 80	WW: 836
	RRAR FORSIGHT 5S CROSBY FORSIGHT 78U CROSBY AGNES 85M		
	CASSIE OF GUMBO GULCH 39R		
LOT 41X ***	GUMBO GULCH PENDLETON 41X JNI 41X	FEBRUARY 14, 2010 BW: 82	WW: 765
	S A V FINAL ANSWER 0035 HARB PENDLETON 765 J H H A R B BLACK LADY 375 J H CROSBY TOM BOY 106S GEORGINA OF GUMBO GULCH 129U GEORGINA OF GUMBO GULCH 78G		
LOT 44X *	GUMBO GULCH DYNAMITE 44X JNI 44X	FEBRUARY 15, 2010 BW: 100	WW: 920
	BALDRIDGE KABOOM K243 KCF MOHNEN DYNAMITE 1356 MOHNEN JILT 910 G D A R RAINMAKER 340 LULU MAR OF RAINMAKER 18E LULU MAR OF GUMBO GULCH 119C		
LOT 45X *	GUMBO GULCH DYNAMITE 45X JNI 45X	FEBRUARY 15, 2010 BW: 104	WW: 1074
	BALDRIDGE KABOOM K243 KCF MOHNEN DYNAMITE 1356 MOHNEN JILT 910 GUMGO GULCH ULTRA 45F BLACKBIRD OF GUMBO GULCH 131L		
LOT 53X *	GUMBO GULCH FORSIGHT 53X JNI 53X	FEBRUARY 18, 2010 BW: 99	WW: 955
	RRAR FORSIGHT SS CROSBY FORSIGHT 91U CROSBY AGNES 85M EVERA OF GUMBO GULCH 11F		
LOT 56X **	GUMBO GULCH FORESITE 56X JNI 56X	FEBRUARY 18, 2010 BW: 96	WW: 933
	RRAR FORSIGHT 5S CROSBY FORSIGHT 78U CROSBY AGNES 85M GUMBO GULCH WHAM 149J BLACKBIRD OF GUMBO GULCH 145M BLACKBIRD OF GUMBO GULCH 52G		

LOT 58X *	GUMBO GULCH DYNAMITE 58X JNI 58X	FEBRUARY 19, 2010 BW: 89	WW: 933
	BALDRIDGE KABOOM K243 KCF MOHNEN DYNAMITE 1356 MOHNEN JILT 910 LOOKOUT TRENSETTER 134L EVERA OF GUMBO GULCH 83P EVERA OF GUMBO GULCH 48J		
LOT 62X ***	GUMBO GULCH PENDLETON 62X JNI 62X	FEBRUARY 19, 2010 BW: 98	WW: 979
	S A V FINAL ANSWER 0035 HARB PENDLETON 765 J H H A R B BLACK LADY 375 J H ALSIKE ACRES RENOVATOR PRINCESS OF GUMBO GULCH 25G PRINCESS OF GUMBO GULCH 75E		
LOT 64X ***	GUMBO GULCH PENDLETON 64X JNI 64X	FEBRUARY 19, 2010 BW: 97	WW: 866
	S A V FINAL ANSWER 0035 HARB PENDLETON 765 J H H A R B BLACK LADY 375 J H F A R KRUGERRAND 410H GEORGINA OF GUMBO GULCH 101R GEORGINA OF GUMBO GULCH 64N		
LOT 65X *	GUMBO GULCH TOMBOY 65X JNI 65X	FEBRUARY 20, 2010 BW: 95	WW: 954
	SEALIN CREEK TOM BOY 51N CROSBY TOM BOY 106S REICH PRIDE 10L TC FOREMAN 016 PRIDE OF GUMBO GULCH 120R PRICE OF GUMBO GULCH 146K		
LOT 67X ***	GUMBO GULCH PENDLETON 67X JNI 67X	FEBRUARY 20, 2010 BW: 85	WW: 901
	S A V FINAL ANSWER 0035 HARB PENDLETON 765 J H H A R B BLACK LADY 375 J H GUMBO GULCH FOREMAN 107R BLACKBIRD OF GUMBO GULCH 209U BLACKBIRD OF GUMBO GULCH 131L		

LOT 69X ***	GUMBO GULCH PENDLETON 69X JNI 69X	FEBRUARY 21, 2010 BW: 77	WW: 710
	S A V FINAL ANSWER 0035 HARB PENDLETON 765 J H H A R B BLACK LADY 375 J H ANKONIAN WERNER WILD FIRE 96 BLACKCAP OF GUMBO GULCH 101U BLACKCAP OF GUMBO GULCH 53P		
LOT 74X *	GUMBO GULCH TOMBOY 74X JNI 74X	BW: 107	WW: 894
	SEALIN CREEK TOM BOY 51N CROSBY TOM BOY 106S REICH PRIDE 10L MISS DIANE OF GUMBO GULCH 63N		
LOT 75X ***	GUMBO GULCH PENDLETON 75X JNI 75X	FEBRUARY 23, 2010 BW: 85	WW: 737
	S A V FINAL ANSWER 0035 HARB PENDLETON 765 J H H A R B BLACK LADY 375 J H TC STOUT 407 BESSIE OF GUMBO GULCH 75U BESSIE OF GUMBO GULCH 42R		
LOT 77X ***	GUMBO GULCH PENDLETON 77X JNI 77X	FEBRUARY 23, 2010 BW: 96	WW: 911
	S A V FINAL ANSWER 0035 HARB PENDLETON 765 J H H A R B BLACK LADY 375 J H F A R KRUGERRAND 410H CASSIE OF GUMBO GULCH 90P CASSIE OF GUMBO GULCH 58M		
LOT 79X ***	GUMBO GULCH PENDLETON 79X JNI 79X	FEBRUARY 23, 2010 BW: 85	WW: 1008
	S A V FINAL ANSWER 0035 HARB PENDLETON 765 J H H A R B BLACK LADY 375 J H H A IMAGE MAKER 0415 ROSE OF GUMBO GULCH 62U ROSE OF GUMBO GULCH 163S		
LOT 81X *	GUMBO GULCH DYNAMITE 81X JNI 81X	FEBRUARY 24, 2010 BW: 83	WW: 820
	BALDRIDGE KABOOM K243 KCF MOHNEN DYNAMITE 1356 MOHNEN JILT 910 F A R KRUGERRAND 410h ERICA OF GUMBO GULCH 40R ERICA OF GUMBO GULCH 62N		

LOT 83X **	GUMBO GULCH NUGGET 83X JNI 83X	FEBRUARY 25, 2010 BW: 79	WW: 749
	B.B.A.R. NUGGET 318 B.B.A.R. NUGGET 765 B.B.A.R. BLACKCAP 3165 BAR J P LEGEND 70K EVERA OF GUMBO GULCH 126M EVERA OF GUMBO GULCH 20E		
LOT 87X *	GUMBO GULCH OLD POST 87X JNI 87X	BW: 90	WW: 820
	DOUBLE AA BLACKMAN 252'96 DOUBLE AA OLD POST BANDOLIER DOUBLE AA ANNIE K 548'99 ROSE OF GUMBO GULCH 61P		
LOT 88X **	GUMBO GULCH NUGGET 88X JNI 88X	FEBRUARY 26, 2010 BW: 89	WW: 930
	B.B.A.R. NUGGET 318 B.B.A.R NUGGET 765 B.B.A.R. BLACKCAP 3165 GUMBO GULCH DUSTIN 4E EVERA OF GUMBO GULCH 135J EVERA OF GUMBO GULCH 129B		
LOT 90X *	GUMBO GULCH FORSIGHT 90X JNI 90X	FEBRUARY 26, 2010 BW: 85	WW: 700
	RRAR FORSIGHT 5S CROSBY FORSIGHT 91U REICH PRIDE 10L LOOKOUT TRENDSETTER 124L PRIDE OF GUMBO GULCH 75N PRIDE OF GUMBO GULCH 8J		
LOT 93X ***	GUMBO GULCH PENDLETON 93X JNI 93X	FEBRUARY 27, 2010 BW: 89	WW: 815
	S A V FINAL ANSWER 0035 HARB PENDLETON 765 J H H A R B BLACK LADY 375 J H S A V PEACEMAKER 3179 BESSIE OF GUMBO GULCH 93U GUMBO GULCH BESSIE 95F		
LOT 98X **	GUMBO GULCH FORSIGHT 98X JNI 98X	MARCH 2, 2010 BW: 92	WW: 805
	RRAR FORSIGHT 5S CROSBY FORSIGHT 78U CROSBY AGNES 85M H A IMAGE MAKER 0415 MISS DIANE OF GUMBO GULCH 103U MISS DIANE OF GUMBO GULCH 63N		

LOT 99X *	GUMBO GULCH OLD POST JNI 99X	MARCH 2, 2010 BW: 92	WW: 823
	DOUBLE AA BLACKMAN 252'96 DOUBLE AA OLD POST BANDOLIEER DOUBLE AA ANNIE K 548'99 GUMBO GULCH TRAVELER 20F GEORGINA OF GUMBO GULCH 38J GEORGINA OF GUMBO GULCH 4G		
LOT 102X ***	GUMBO GULCH PENDLETON 102X JNI 102X	MARCH 3, 2010 BW: 79	WW: 735
	S A V FINAL ANSWER 0035 HARB PENDLETON 765 J H H A R B BLACK LADY 375 J H CROSBY TOM BOY 115R CROSBY ENCHANTRESS 113U CROSBY ENCHANTRESS 89N		
LOT 104X *	GUMBO GULCH TOM BOY 104X JNI 104X	MARCH 3, 2010 BW: 92	WW: 806
	SEALIN CREEK TOM BOY 51N CROSBY TOM BOY 106S REICH PRIDE 10L GUMBO GULCH ULTRA 45F PRIDE OF GUMBO GULCH 167L PRIDE OF GUMBO GULCH 37A		
LOT 105X *	GUMBO GULCH OLD POST 105X JNI 105X	MARCH 4, 2010 BW: 83	WW:740
	DOUBLE AA BLACKMAN 252'96 DOUBLE AA OLD POST BANDOLIER DOUBLE AA ANNIE K 548'99 TAFIKA PFRED 51K LUCY OF GUMBO GULCH 128N LUCY OF GUMBO GULCH 99G		
LOT 121X *	GUMBO GULCH 834LEGACY 121X JNI 121X	MARCH 11, 2010 BW: 103	WW: 758
	O C C LEGACY 839L B.B.A.R LEGACY 834 B.B.A.R. RUBY BELLE 34'99 TC FOREMAN 016 BLACKBIRD OF GUMBO GULCH 74R BLACKBIRD OF GUMBO GULCH 99G		

LOT 122X **	GUMBO GULCH NUGGET 122X JNI 122X	MARCH 12, 2010 BW: 81	WW: 850
	B.B.A.R. NUGGET 318 B.B.A.R NUGGET 765 B.B.A.R. BLACKCAP 3165 RR TRAVELER 5204 BLACKCAP OF GUMBO GULCH 29G BLACKCAP OF GUMBO GULCH 122C		
LOT 125X **	GUMBO GULCH FORSIGHT 125X JNI 125X	MARCH 12, 2010 BW: 86	WW: 740
	RRAR FORSIGHT 5S CROSBY FORSIGHT 78U CROSBY AGNES 85M ANKONIAN WERNER WILD FIRE 96 BESSIE OF GUMBO GULCH 126U HAMBLIN BESSIE 9M		
LOT 126X *	GUMBO GULCH FORSIGHT 126X JNI 126X	MARCH 13, 2010 BW: 93	WW: 888
	RRAR FORSIGHT 5S CROSBY FORSIGHT 91U REICH PRIDE 10L F A R KRUGERRAND 410H BLACKCAP OF GUMBO GULCH 53P BLACKCAP OF GUMBO GULCH 56K		
LOT 130X *	GUMBO GULCH FORSIGHT 130X JNI 130X	MARCH 16, 2010 BW: 90	WW: 835
	RRAR FORSIGHT 5S CROSBY FORSIGHT 91U REICH PRIDE 10L GUMBO GULCH DUSTIN 4E GEORGINA OF GUMBO GULCH 78G GEORGING OF GUMBO GULCH 95C		
LOT 133X *	GUMBO GULCH FORSIGHT 133X JNI 133X	MARCH 17, 2010 BW: 103	WW: 803
	RRAR FORSIGHT 5S CROSBY FORSIGHT 91U REICH PRIDE 10L SITZ ALLIANCE 6595 LUCY OF GUMBO GULCH 81P LUCY OF GUMBO GULCH 81H		

LOT 138X **	GUMBO GULCH NUGGET 138X JNI 138X	MARCH 19, 2010 BW: 87	WW: 850
	B.B.A.R. NUGGET 318 B.B.A.R NUGGET 765 B.B.A.R. BLACKCAP 3165 BICKFORD KRUGERRAND 65K EVERA OF GUMBO GULCH 23N EVERA OF GUMBO GULCH 93G		
LOT 139X **	GUMBO GULCH 834 LEGACY 139X JNI 139 X	MARCH 20, 2010 BW: 84	WW: 728
	O C C LEGACY 839L B.B.A.R LEGACY 834 B.B.A.R. RUBY BELLE 34'99 GUMBO GULCH BANDO 191R BLACKBIRD OF GUMBO GULCH 194T BLACKBIRD OF GUMBO GULCH 112R		
LOT 145X **	GUMBO GULCH 834 LEGACY 145X JNI 145X	MARCH 23, 2010 BW: 80	WW: 769
	O C C LEGAY 839L B.B.A.R LEGACY 834 B.B.A.R. RUBY BELLE 34'99 GUMBO GULCH DUSTIN 4E PRIDE OF GUMBO GULCH 64J PRIDE OF GUMBO GULCH 84A		
LOT 154X *	GUMBO GULCH FORSIGHT 154X JNI 154X	APRIL 5, 2010 BW: 95	WW: 826
	RRAR FORSIGHT 5S CROSBY FORSIGHT 91U REICH PRIDE 10L BICKFORD KRUGERRAND 65K EVERA OF GUMBO GULCH 136M EVERA OF GUMBO GULCH 98K		
LOT 163X *	GUMBO GULCH FORSIGHT 163X JNI 163X	APRIL 16, 2010 BW: 90	WW: 811
	RRAR FORSIGHT 5S CROSBY FORSIGHT 91U REICH PRIDE 10L WEAVERLAND VALLEY DUSTIN PRIDE OF GUMBO GULCH 104F GUMBO GULCH PRIDE 58Z		
LOT 166X *	GUMBO GULCH FORSIGHT 166X JNI 166X	APRIL 16, 2010 BW: 82	WW: 802
	CROSBY FORSIGHT 91U EVERA OF GUMBO GULCH 48J		

Lynn Jackson and Harry Hooke CANYON TREE FARMS INC.

Fort S. James, BC
Phone: (250) 996-8180 • Cell: (250) 996-1728
lynnjackson@ctfarms.ca

Black Angus



This is the third calf from this dam - one of the bred heifers we bought from Gumbo Gulch - and she has remained true to form and produced another very stocky well balanced bull. This young bull has some outstanding genetics on both sides and has the potential to become a very productive herd sire. Although he probably won't have the height or length of the Kruggerand genetics, he will have the muscling and depth of rib that comes from the Freedom offspring. This bull is available for viewing at Lazy B Ranch in Fort Fraser.

LOT CTFA 14X

JANUARY 25, 2010

BW: 90 WW: 603
FEBRUARY 10, 2011 WEIGHT: 1128

CTF BEAUTY LASS FREEDOM 14X

GUMBO GULCH
FREEDOM 44S

{ TC FREEDOM 104 NHF AMF
LUCY OF GUMBO GULCH

{ BEAUTY LASS OF
GUMBO GULCH 14S

{ GUMBO GULCH KRUGGERAND 19P
BEAUTY LASS OF GUMBO GULCH 21P

	Birth Weight	Weaning Weight	Yearling Weight	Milk	Total Maternal	Scrotal Circ.	Calving Ease	Mat. Calving Ease
EPD	+3.0	+33	+62	+19	+36	+0.51	0.0	+3.0
Acc	33	22	12	10	/	P	22	8



This is a Predominant son out of a Gumbo Gulch dam. This bull is very nicely put together - once again, he has the right combination of natural muscling, depth of rib and ability to gain that will make him a natural choice for anyone wanting to enhance carcass potential in their calves. This bull has maintained an average daily gain of over 3.25 lbs since weaning and is becoming thicker by the day. This bull is available for viewing at Lazy B Ranch in Fort Fraser.

LOT CTFA 53X

FEBRUARY 10, 2010

BW: 96 WW: 733
FEBRUARY 10, 2011 WEIGHT: 1186

**CTF BEAUTY LAD
PREDOMINANT 53X**

PREDOMINANT 788T

{ S A V 004 PREDOMINANT 4438 NHF AMF CAF
N.B.A. 4G HI LITE 33M

{ BEAUTY LASS OF
GUMBO GULCH 53S

{ TC FREEDOM 104 AMF NHF
BEAUTY LASS OF GUMBO GULCH 44K

	Birth Weight	Weaning Weight	Yearling Weight	Milk	Total Maternal	Calving Ease	Mat. Calving Ease
EPD	+3.7	+46	+80	+16	+39	-1.0	+5.0
Acc	32	20	8	10	/	22	8

This is our third year consigning to the "First Choice Bull Sale". Once again, we are very honoured to be a part of this great tradition. The four yearling bulls we have for offer in the sale are a direct result of the years of careful breeding and genetic selection that Gumbo Gulch has worked so hard to create. Our goal is to raise moderate framed cattle that produce calves with moderate birth weights, exceptional gain, all round quality performance and outstanding carcasses. We feel that these bulls have the genetic backgrounds and potential to exceed those expectations and become a valuable asset to any herd. Please check out our website to view pictures of these bulls and to see their sires. Please call if you have any questions. We look forward to seeing you at the sale.



This is another Predominant son out of a Gumbo Gulch dam. This is the third bull calf from this dam and once again she has produced an exceptional calf. This is the youngest bull for offer and he has done nothing but grow since he hit the ground. The combination of his natural muscling, depth of rib and ability to gain make him a natural choice for anyone wanting to enhance carcass potential in their calves. This bull is available for viewing at Lazy B Ranch.

LOT CTFA 75X

FEBRUARY 24, 2010

BW: 90 WW: 725

FEBRUARY 10, 2011 WEIGHT: 1138

CTF EVERA PREDOMINANT 75X

{ C. BAR PREDOMINANT

{ S A V 004 PREDOMINANT 4438
N.B.A. 4G HI LITE 33M

{ EVERA OF GUMBO
GULCH 75T

{ S A F STRATEGY 9015
EVERA OF GUMBO GULCH 41P

	Birth Weight	Weaning Weight	Yearling Weight	Milk	Total Maternal	Calving Ease	Mat. Calving Ease
EPD	+2.3	+49	+84	+18	+43	2.0	+7.0
Acc	32	20	8	10	/	22	8



This is a very typical Freedom son – he has great depth of rib and is well muscled but he has the makings of a great heifer bull - not only does he have the lower birth weight, but he has a smaller head and very smooth shoulders. He will provide worry free calving ease for your heifers and yet still provide you with great gain and outstanding conformation. This bull calf is available for viewing at the farm.

LOT CTFA 111X

JANUARY 24, 2010

BW: 74 WW: 670

FEBRUARY 10, 2011 WEIGHT: 1100

**CTF BELL FREEDOM
111X**

{ GUMBO GULCH
FREEDOM 44S
BELL OF GUMBO
GULCH 111S

{ TC FREEDOM 104 NHF AMF
LUCY OF GUMBO GULCH 99G

{ MYTTY IN FOCUS NHF AMF CAP
BELL OF GUMBO GULCH 5F

	Birth Weight	Weaning Weight	Yearling Weight	Milk	Total Maternal	Calving Ease	Mat. Calving Ease
EPD	-1.0	+42	+76	+21	+42	+10.0	+10.0
Acc	33	23	14	11	/	22	9

TERMS & CONDITIONS OF SALE

LIABILITIES: All persons who attend the sale do so at their own risk and Patterson's Auction Mart Ltd., and Breeders assume no liability, legal or otherwise, for any accidents which may occur. The contributor is not held responsible for damage caused by foreign bodies, physical injury, mismanagement, or any sickness not apparent at the time of sale. Therefore it is important to insure your bull and is required if the bull is to be returned to consignor's place, after the animal is sold .

ANNOUNCEMENTS: Errors discovered in the catalogue will be corrected by announcements from the auction stand at sale time and such corrections will take precedence over the printed matter in the catalogue. Other information will be updated on sale day.

REGISTRATION & TRANSFER: All animals sell with completed registration certificates and will

be transferred to the new owner following the sale.

TERMS & SETTLEMENT: Terms of the sale are cash or certified cheque and settlement must be made immediately after completion of sale. Settlement to be made before animals are removed from the premises.

BREEDER'S GUARANTEE: All bulls have been semen evaluated by a Veterinarian. In the event that a bull fails to service cows, the individual seller shall be contacted and a satisfactory and fair settlement will be made.

REMOVAL: If you are unable to move your bull after the sale, there will be no charge up to May 1, 2011. After this date a charge of \$2.00 per day will apply. Bull must be insured.

HERD HEALTH: Herd is vaccinated with Bovishield Gold - 5, Ultra Choice 8 and Ivomec.

Thank you for attending our sale.



Ph: (250) 782-1777
Fax: (250) 782-1775

www.integratire.com

1145 Alaska Avenue, Dawson Creek, BC

Walter Fritsche Trucking

Custom Feed Hauling

(250) 784-5124

Dawson Creek Veterinary Clinic

Dr. Mike Ross

Dr. Zoë Ross

**Small Animal
(250) 782-5616**



Dr. Andrew Hodges

Dr. Sandy Jameson

**Large Animal
(250) 782-1080**

238-116 Avenue
Dawson Creek, BC V1G 3C8

FIRST CHOICE BULL SALE



GUMBO GULCH CATTLE CO. ~ BLACK ANGUS
(250) 786-5478 • (250) 784-5136

• • •

